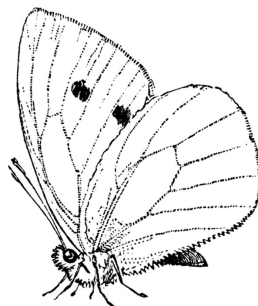
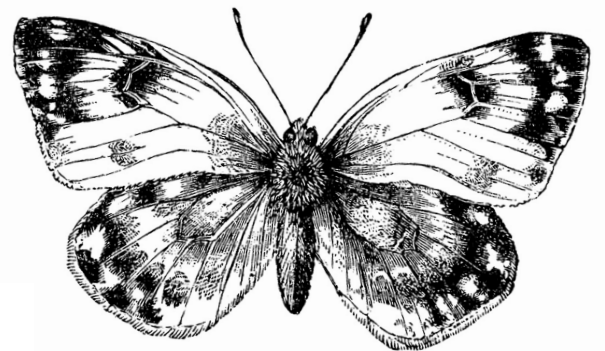
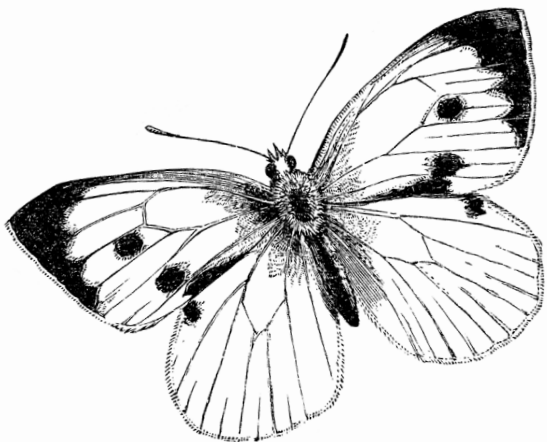
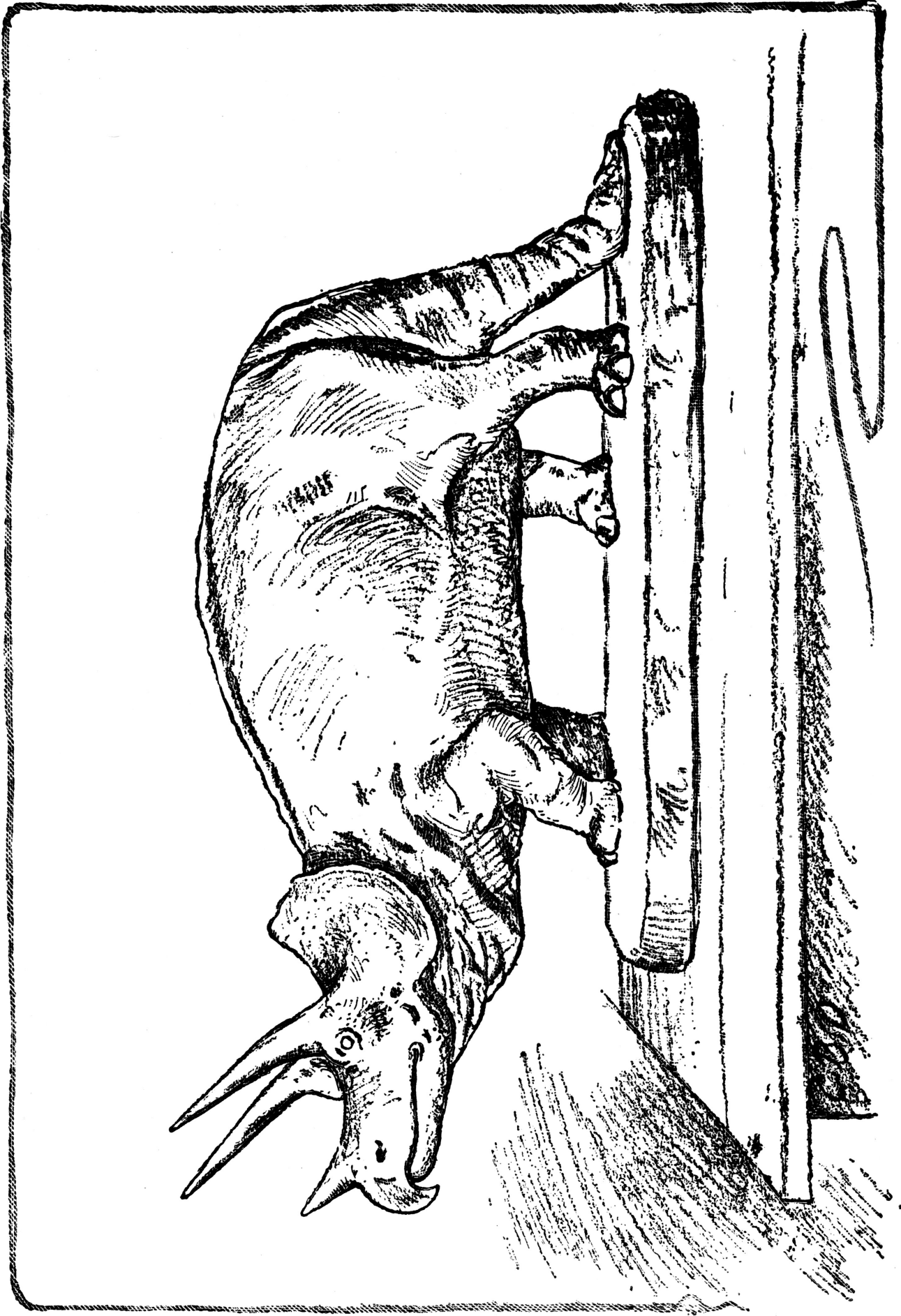


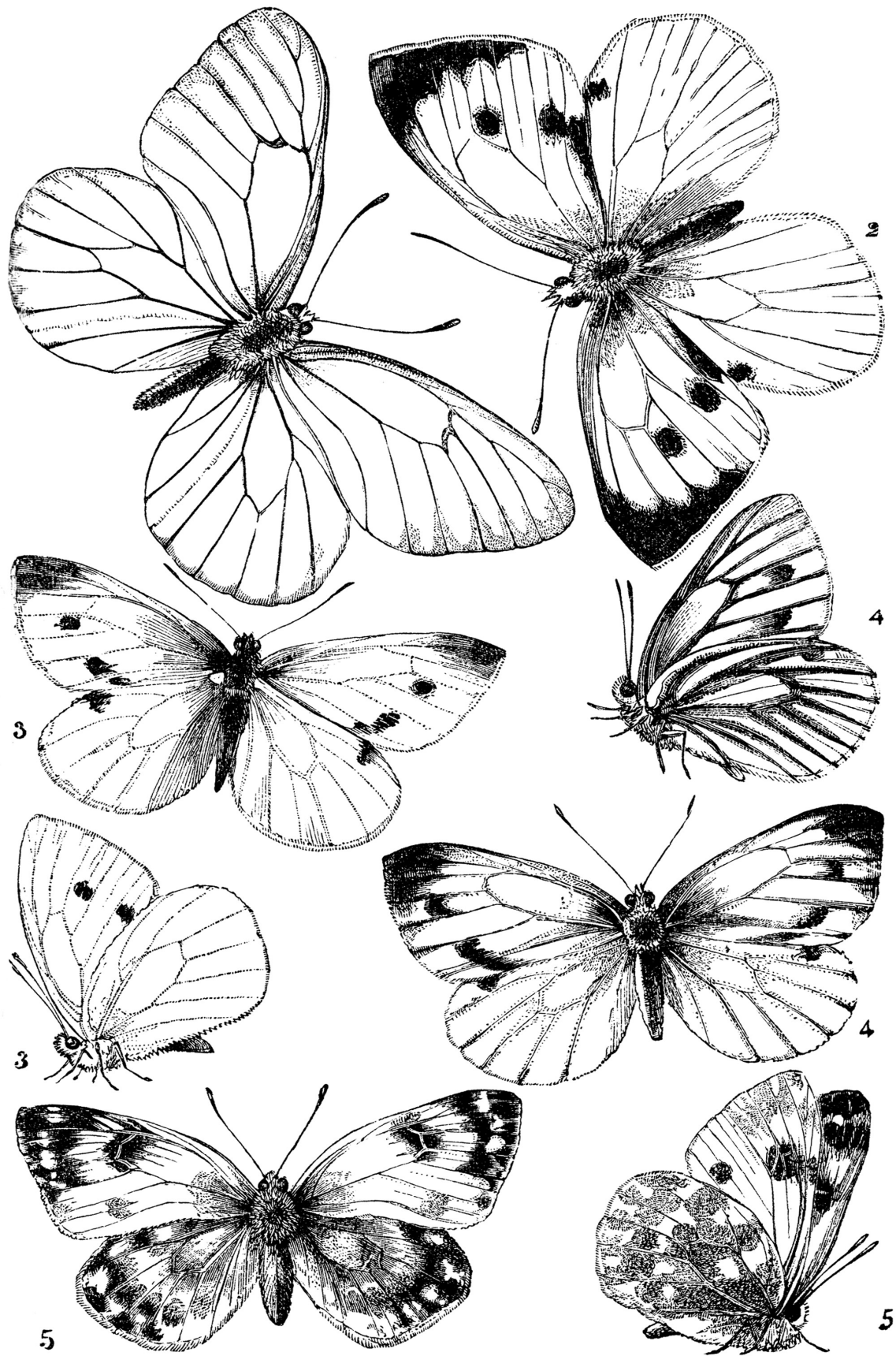
# COLOR OUR COLLECTIONS



**PUBLIC DOMAIN IMAGE COLORING SHEETS FOR YOU  
FROM THE COLLECTIONS OF THE UC BERKELEY LIBRARY**







IV.





# THE SAN FRANCISCO SUNDAY CALL

MAGAZINE SECTION  
PART - I -

JULY 4<sup>TH</sup>.  
1909



“WOMAN  
and the  
BALLOT”  
NUMBER

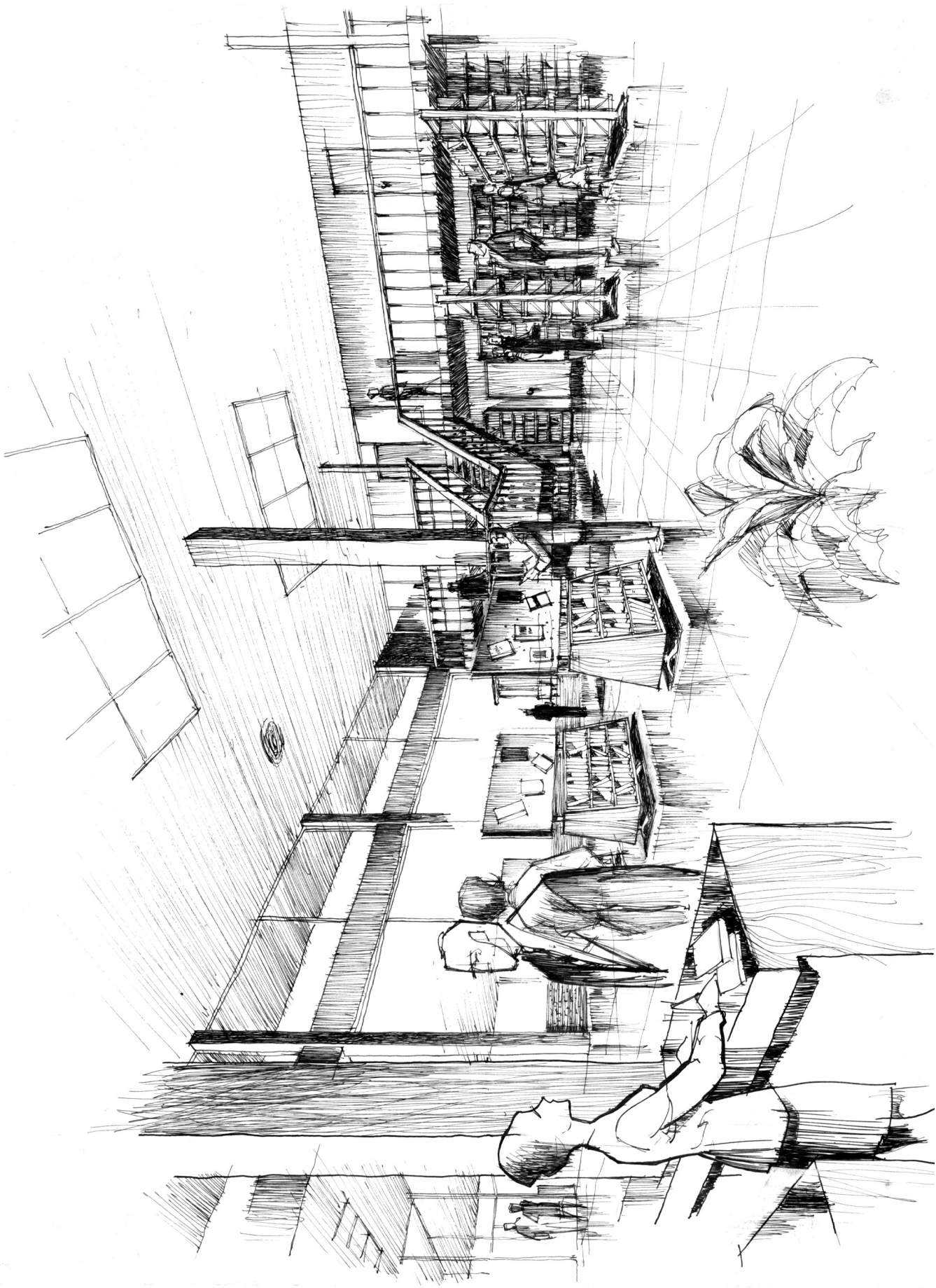
PORTRAIT STUDIES FROM  
LIFE OF BEAUTIFUL WOMEN  
OF SAN FRANCISCO SO-  
CIETY WILL BE CONTINUED  
ON THIS PAGE NEXT SUNDAY

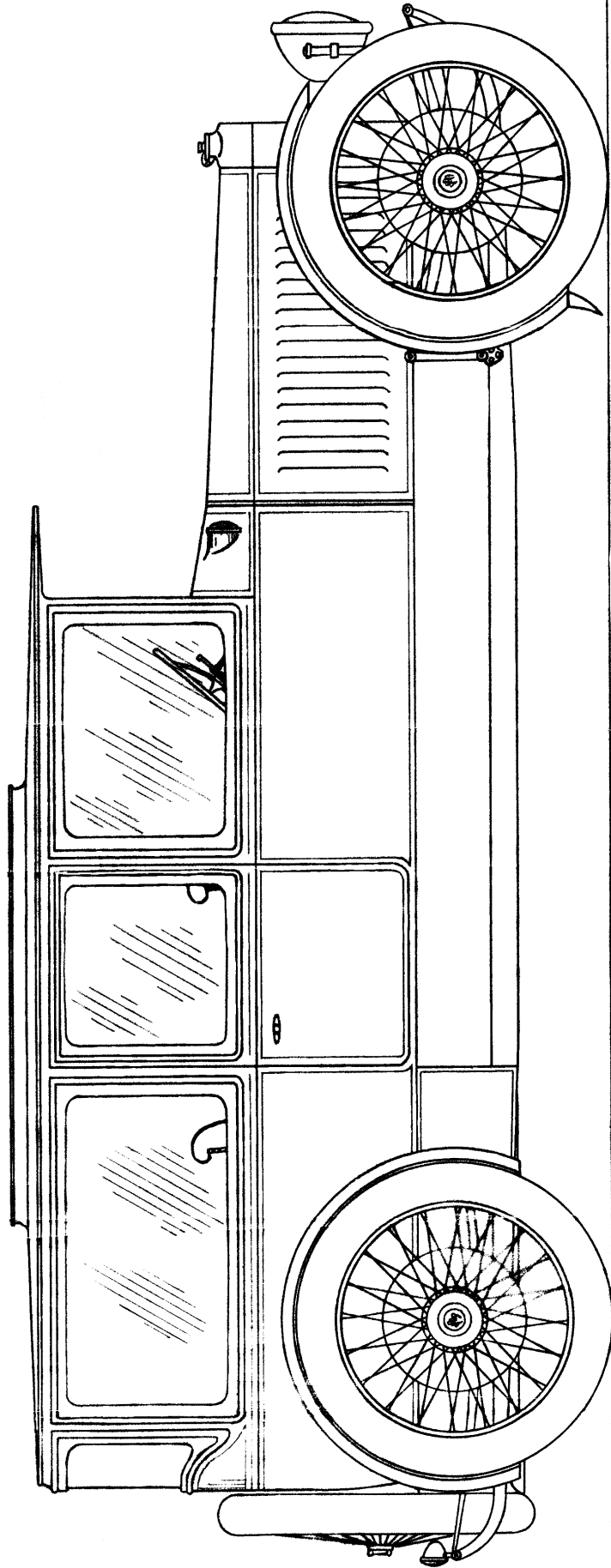


Peabody-bird.









THE  
DOBLE-STEAM-PULLMAN.

14.4" WHEEL-BASE. 56" TREAD. 40x35" WIRE-WHEELS. 4x6" ENGINE. 20x26" BOILER. 35 GALS. OF FUEL. 25 GALS. OF WATER. A DOBLE. MAR. 12, 1912. SCALE: 3/4" = 1 FT.



